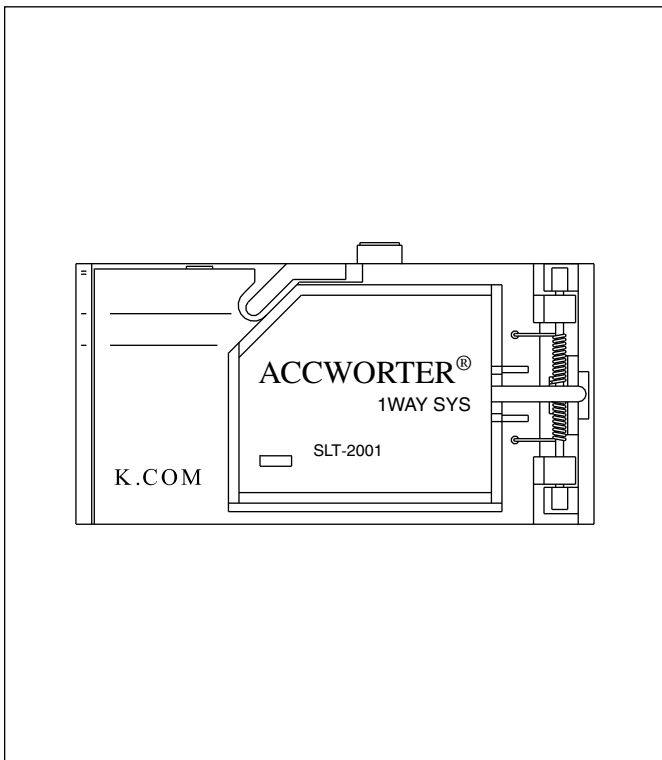


K.COM

OPERATION MANUAL

COIN SELECTOR

Please read this operation manual carefully before using our mechanism to use correctly.



■ CONTENTS ■

- MODEL : KCM - SLT 2001
(1 way system)
- POWER : +5VDC,+24VDC
- USABLE COIN
 - Diameter : 15~30mm
 - Thickness : 1.2~2.8mm
- POWER CONSUMPTION :
 - 0.5W (Waiting mode)
 - 0.5W (Operating mode)
- TEMPERATURE RANGE :
 - -15~ +55
- CONSERVATION :
 - -30 ~ +70
- DIMENSIONS : W98.5 x D53 x H50
- WEIGHT : 140g

KOREA COIN MECHATRONICS CO., LTD.

◆ INDEX ◆

1. INTRODUCTION

2. ROUTE OF COINS

2-1) Route of regular coins

2-2) Route of damaged coins

3. MAIN CONNECTOR

4. TIME CHART

5. INTERFACE CIRCUIT

6. DIMENSIONS

1.INSTRODUCTION

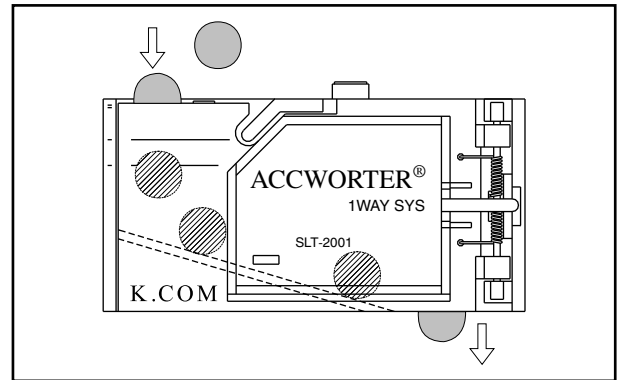
Coin selector (KCM-SLT2001) is the lightest and the smallest coin acceptor of 1 way system which can discriminate the eight different kinds of coins without considering the kind of coin as it is usable.

Especially, it can easily discriminate different coins of many countries by their diameter, material, thickness. And it is easily attached and used.

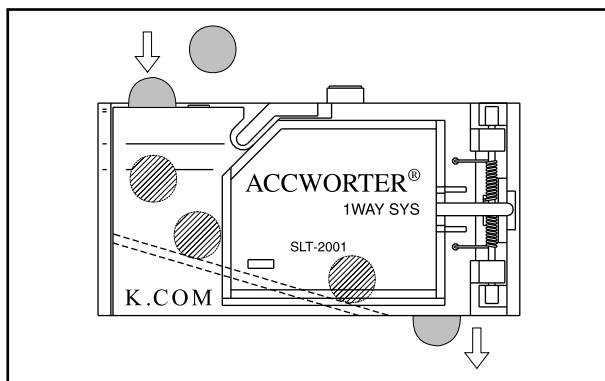
2.ROUTE OF COINS

2-1) Route of regular coins

Inserted coin drops into safe through the way by transmitting coin signal after it is discriminated for regular coin



2-2) Route of damaged coins



Discriminated for damaged coin drops into safe through the same way with regular coin without coin signal.

Especially, all inserted coins are automatically drops into safe without considering whether it is regular coin or not and can not be returned.

3. MAIN CONNECTOR

- Header R/A : Molex 53015-12
- Housing : Molex 51004-12.

PIN NO	SIGNAL NAME	I/O	DESCRIPTION	REMARK
1	REJ		Not use	*
2	DIS		Not use	*
3	Coin D	O	Coin Signal D	A-High
4	Coin C	O	Coin Signal C	A-High
5	Coin B	O	Coin Signal B	A-High
6	Coin A	O	Coin Signal A	A-High
7	CLR	I	Coin Signal Clear	A-High
8	TXD		Not use	*
9	RXD		Not use	*
10	GND	O	Power restoring	GND
11	+5V	I	Power input	+4.8V~+5.2V
12	+24V	I	Напряжение	+ 22V ~+26V

4. TIME CHART

1) COIN A-D(O)



*Max velocity for continuous inserting : Approx 1.5ea / 1sec
 Coin signal A=10Ruble, B=5Ruble, C=2Ruble, D=1Ruble, (A+D=50Kopek)

5. MAINTENANCE

5-1) Trouble indicator function of LED condition

- ① Waiting mode for coin acceptance normally : LED "ON"
- ② Not turned power or not initial mode : LED "OFF"
- ③ Coin jamming on the light sensor part : light on and off once a second
- ④ Coin discrimination sensing parts is faulty : light on and off twice a second

5-2) Matters that demand special attention

- ① Please be careful to do not create any mechanical shock or dropping as it is precise assembly.
- ① Before turning off the power, any connection and disconnection with vending machine is strictly prohibited.
- ① Keep out high temperature and humid places because coin mechanism has circuit inside.

5-3) Simple cleaning

Power must be off

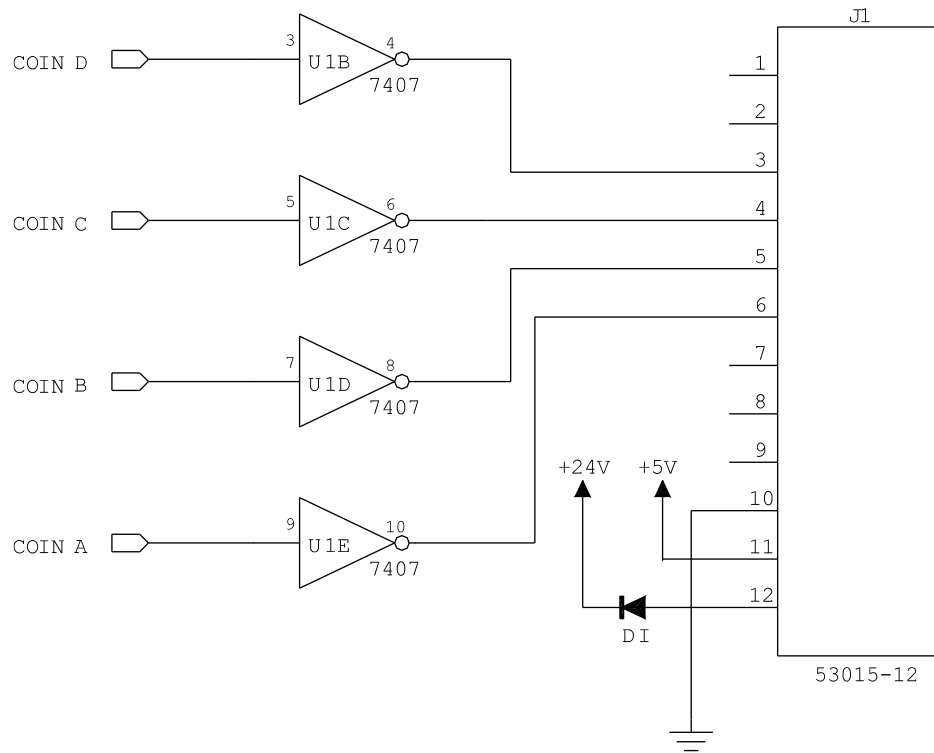
- ① Pull the coin sensing part of coin selector toward the front and then clean the bottom part of body and coin moving rail.
- ② Check if there is any other substance on the surface of inserting and ejecting sensor.

< Attention >

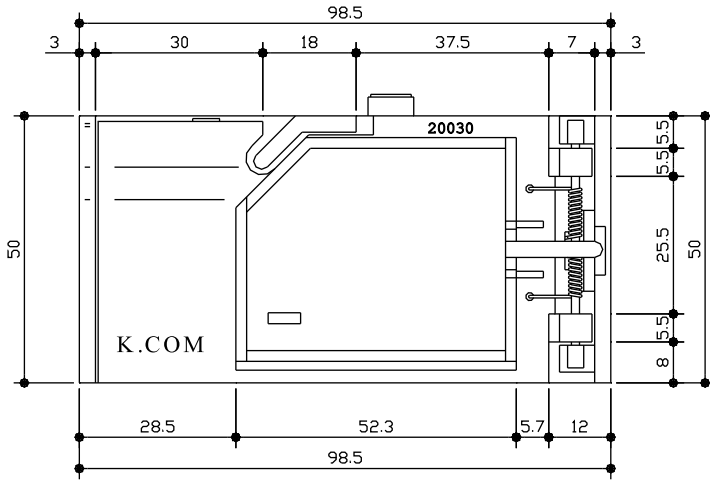
- ▶ In case of using a cleaning agent, avoid using solvents like lubrication oil and thinner. Using alcohol and wipe with a dry cloth
- ▶ After finishing the checking and simple cleaning of the machine, check normal condition of the coin selector. Then insert a coin to check for any errors.
- ▶ If you assemble or disassemble this product without any pertinent purpose except above listed case, it will not included in free A/S range.

So when any problem occurs, you must call to K.COM for repair.

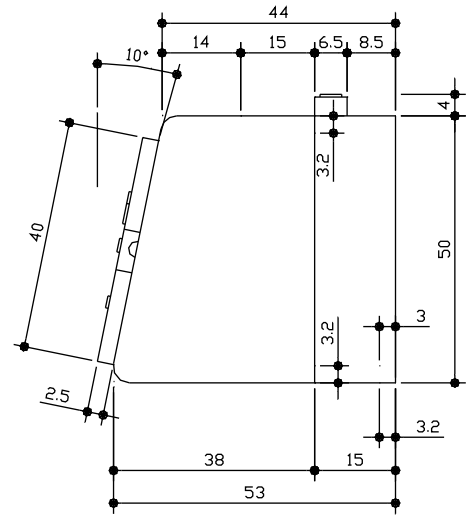
6. INTERFACE CIRCUIT



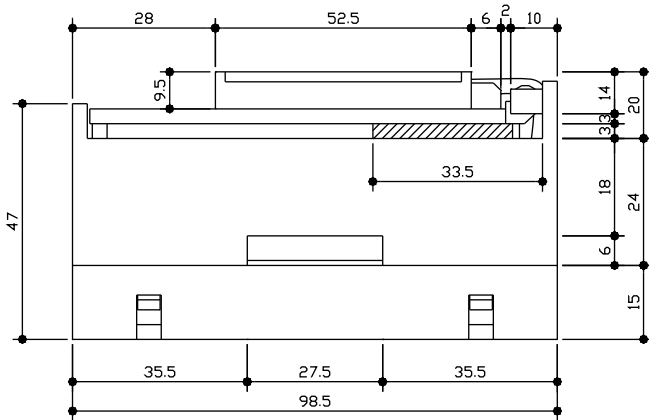
6. DIMENSIONS



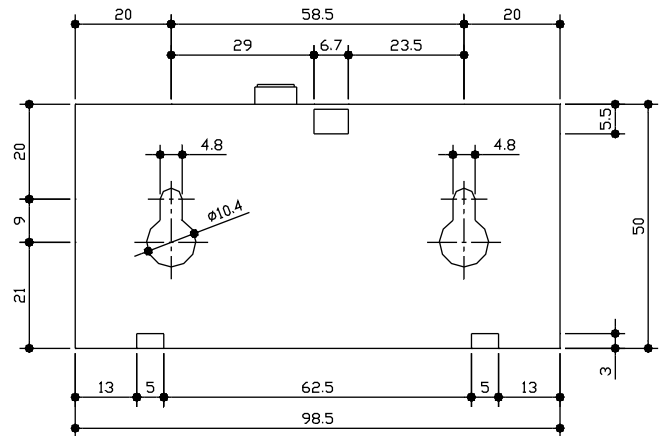
FRONT VIEW



RIGHT VIEW



BOTTOM VIEW



REAR VIEW